



ITEM #: \_\_\_\_\_ QTY: \_\_\_\_\_  
 MODEL #: \_\_\_\_\_  
 PROJECT NAME: \_\_\_\_\_

012218

3601 S. Banker St. Effingham, IL 62401 • P.O. BOX 609 • Ph: (888) 431-2667 • Fax: (800) 433-2667

## **"EPT8R5-SSK" STAINLESS STEEL PREP TABLE W/ SINK**



- WITH 18GA STAINLESS STEEL WORK TOP
- WITH STAINLESS BASE & ADJUSTABLE UNDERSHELF

### **FEATURES:**

- 18 GAUGE STAINLESS STEEL TOP W/ 5" RISER & TURNDOWN
- TYPE 300 STAINLESS STEEL WITH # 4 POLISH, SATIN FINISH
- 1 1/2" STALLION EDGE ON FRONT WITH SIDE EDGES 90 DEGREE BEND DOWN FOR TABLE LINE-UP
- (1) 16" X 20" X 10" BOWL
- STAINLESS STEEL BASE WITH ADJUSTABLE UNDERSHELF
- ADJUSTABLE BULLET FEET
- SHIPPED KNOCKED-DOWN, EASY-TO-ASSEMBLE
- NSF CERTIFIED

ADJUSTABLE SHELF



L = LEFT BOWL  
R = RIGHT BOWL

### **CONSTRUCTION:**

- TOP: STAINLESS STEEL TOPS ARE TIG WELDED, EXPOSED WELDS ARE POLISHED TO MATCH ADJACENT SURFACE.

### **MATERIAL:**

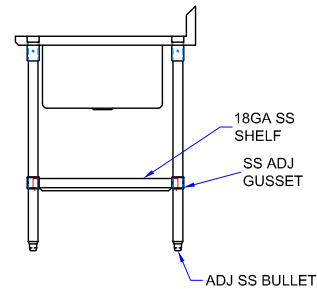
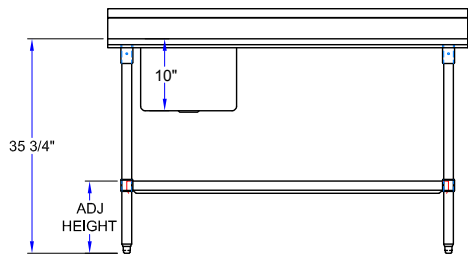
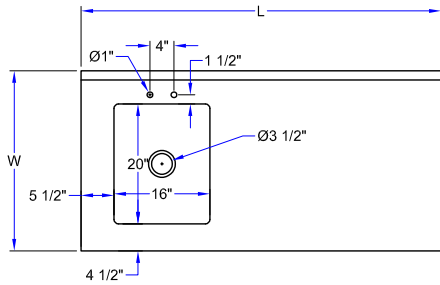
- TOP: 18 GAUGE STAINLESS STEEL TYPE 300 STAINLESS STEEL WITH # 4 POLISH, SATIN FINISH
- SHELF: 18 GAUGE STAINLESS STEEL,
- LEGS: 1 5/8" ROUND O.D. 16 GAUGE TUBULAR STAINLESS STEEL
- GUSSETS: STAINLESS STEEL
- FEET: 1" ADJUSTABLE STAINLESS BULLET FEET

### **STAINLESS STEEL PREP TABLE W/ SINK**

30" WIDE	QTY
EPT8R5-3048SSK-L	
EPT8R5-3048SSK-R	
EPT8R5-3060SSK-L	
EPT8R5-3060SSK-R	
EPT8R5-3072SSK-L	
EPT8R5-3072SSK-R	



# DETAILED SPECIFICATIONS

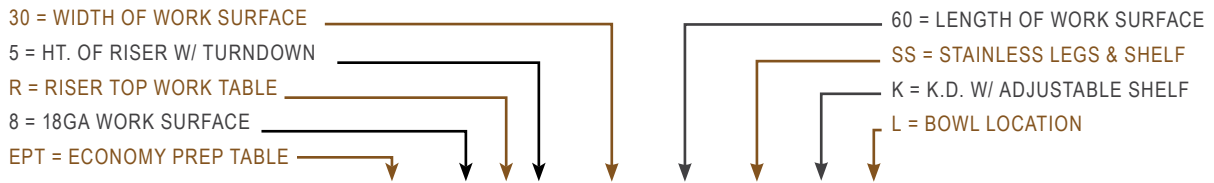


- ALL UNITS SHIP UNASSEMBLED FOR REDUCED SHIPPING COST.
- UNITS 7 FT. AND LARGER ARE FURNISHED WITH SIX LEGS.
- ALL DIMENSIONS ARE TYPICAL.
- TOLERANCE +/- .500".
  
- FINISHED SIZE OF UNDERSHELF.  
 SHELF LENGTH = LENGTH MINUS 4.875"  
 SHELF WIDTH = WIDTH MINUS 4.25"

## STAINLESS STEEL PREP TABLE W/ SINK

LENGTH	30" WIDE	WT. (LBS)
<b>48"</b>	EPT8R5-3048SSK-L	145
<b>48"</b>	EPT8R5-3048SSK-R	145
<b>60"</b>	EPT8R5-3060SSK-L	171
<b>60"</b>	EPT8R5-3060SSK-R	171
<b>72"</b>	EPT8R5-3072SSK-L	202
<b>72"</b>	EPT8R5-3072SSK-R	202

## MODEL # STRUCTURE



# EPT8R5-3060SSK-L

SOME UNITS SHIP UNASSEMBLED FOR REDUCED SHIPPING COST. ALL DIMENSIONS ARE TYPICAL. TOLERANCE +/- .500"  
 John Boos & Co. is constantly engaged in a program of improving products and therefore reserves the right to change specifications without prior notice.